

2026 Rural Clinical School Opportunities & Support

Acknowledgement of Country

The University of Queensland (UQ) acknowledges the Traditional Owners and their custodianship of the lands on which we meet.

We pay our respects to their Ancestors and their descendants, who continue cultural and spiritual connections to Country.

We recognise their valuable contributions to Australian and global society.

*The Brisbane River pattern from A Guidance Through Time
by Casey Coolwell and Kyra Mancktelow.*



Commitment to Diversity and Inclusion

Diverse perspectives, abilities, experiences and backgrounds inspire creativity, encourage innovation and enrich our communities.

Members of our broad community are valued and respected for their individuality. UQ strives to create a culturally safe, welcoming and inclusive workplace, with strong community connections and partnerships.



2026 Rural Clinical School Immersion Experiences

Year 3 (MEDI7300) Rural Immersion

- Rural Clinical School students undertake a rural immersion in a rural hospital (see [here](#) for placement information)
- 5 x 8-week immersions (preferences for immersion order (14-18 July) & rural location (25 Aug -1 Sept))
- Opportunities available to regional students only

Year 4 (MEDI7400) *Clinical Extension*

- 8-week clinical extension – rural placement (Hospital or Multipurpose Health Service) see [here](#) for placement information
- 8-week clinical extension – regional placement (Medical Speciality in Rockhampton, Bundaberg, Hervey Bay or Toowoomba) see available disciplines at each location [here](#))
- Opportunities open to all students (Domestic, International & Ochsner) – preference 4-8 Aug 2025

Year 4 (MEDI7400) *General Practice*

- 8-week General Practice in own Learning Community/Clinical School OR
- 8-week General Practice in a Rural Location (GPiRL) (limited opportunities – by application only- see [here](#) for placement information_
- GPiRL opportunities open to all students (Domestic, International & Ochsner)
- GPiRL Applications can be submitted between 7-18 July 2025 – [click here](#)

Year 4 (MEDI7400) *Extended Placement Program*

- 16-week Extended Placement Program (EPP) – students have the opportunity to immerse themselves in a rural community by completing back-to-back rural Clinical Extension and General Practice immersions in a single community – see [here](#) for more details
- EPP Applications can be submitted between 7-18 July 2025 – [click here](#)

The Rural Advantage

The Rural Clinical school is supported by an extensive network of partners in the Central Queensland (CQ), Darling Downs-South West (DDSW) and Wide Bay (WB) footprint. Ranging from health practitioners to homestay hosts, we are fortunate to work with organisations and individuals who go above and beyond to provide quality experiences in rural settings - inspiring UQ medical students to pursue a Rural Generalist pathway.



- **Work directly with consultants and senior clinicians**
- **Valued member of a small medical team**
- **Hands on experience**
- **Shorter commute to work**
- **Large breadth of clinical conditions**
- **Focus on work readiness**
- **Become part of the local community**
- **You can't be what you can't see – have you always wondered if you would enjoy working in rural Australia?**
- **Free accommodation and placement subsidies**

What do our students say about rural?

2025 Rural Immersion
feedback

Fantastic experience!
All the staff there were
warm and welcoming,
and always happy to
teach! I definitely feel
like I learnt a lot there!

Everyone in the team
was really supportive
including medical,
nursing, admin and
allied health staff. This
really assisted in
creating a supportive
learning environment. I
felt comfortable and
excited to go into
placement each day
and frequently stayed
back for further
learning experiences.

This experience
opened my eyes to
the diverse and
dynamic role of rural
generalists and gave
me valuable insight
into rural healthcare
delivery. I gained
exposure to a wide
range of medical
presentations, which
significantly
strengthened my
clinical confidence.

I felt that the team
were very supportive
of my goals and
eager to teach all of
the students.

This was the best
placement I've ever
been on. The staff
were all consistently
supportive and kind.
They gave us the
freedom to learn on our
own and guide us
when we felt like we
needed it. I'm so
grateful to have gone
for placement and I aim
to go back next year,
and for internship, and
return again for my
fellowship.

Rural & Regional Clinical Immersion Support and Accommodation

The Rural Clinical School is a Commonwealth-supported initiative designed to address rural health workforce shortages. The funding allows for the provision of significant student benefits when undertaking immersions in rural and regional locations. These include:

- ❖ unique clinical experiences
- ❖ free placement accommodation
- ❖ travel subsidies (based on km)
- ❖ placement subsidy (\$50 per week)



Rural Clinical Immersion Support Availability

Course	Experience	Travel subsidy	Placement Subsidy	Free Accommodation
MEDI7300	Rural Clinical Immersion	YES – based on km from LC	YES-\$50 per week \$400	YES
MEDI7400	Clinical Extension Immersion <ul style="list-style-type: none"> Rural and Remote Toowoomba Rockhampton Bundaberg Hervey Bay 	YES – based on km from LC	YES-\$50 per week \$400	YES
MEDI7400	<ul style="list-style-type: none"> GP In a Rural Location (GPiRL) CQ Learning Community GP in Gladstone 	YES – based on km from LC	YES-\$50 per week \$400	YES
MEDI7400	Extended Placement Program (EPP)	YES – based on km from LC	YES-\$50 per week \$800	YES

Schedule of Rural Placement Travel Subsidy	
Less than 100km	\$45
100 – 200km	\$65
201 – 400km	\$130
401 – 600km	\$180
601 – 800km	\$250
801 – 1000km	\$330
1001 - 1500km	\$530
> 1501km	\$670

N.B. While Commonwealth funding can only be utilised to support Domestic students undertaking regional, rural or remote placements in locations classified as Modified Monash Model (MMM) 2-7, to ensure equity, alternate funding will be used to support a limited number of onshore international and Ochsner students to access the same support when undertaking rural or regional immersions. For Ochsner students, travel subsidies will be calculated based on the distance from Brisbane CBD.

Support for RCS Students undertaking Clinical Extension in Greater Brisbane Clinical School

Course	Experience	Travel subsidy	Placement Subsidy	Free Accommodation
MEDI7400	<p>Clinical Extension Immersion</p> <ul style="list-style-type: none"> RCS students travelling to undertake Clinical Extensions immersions in the following Learning Communities: West LC, Central LC, North LC, South LC 	<p>YES – based on km from LC</p> <ul style="list-style-type: none"> Rockhampton \$530 Bundaberg \$250 Hervey Bay \$180 Toowoomba \$130 	<p>YES-\$50 per week \$400</p>	<p>NO – accommodation to be self-arranged consistent with current RCS students choosing to travel to Brisbane to undertake medical speciality placements.</p> <p>To assist students to find suitable short-stay accommodation we will collaborate to develop a platform to list available short-stay accommodation in Brisbane. GBCS students and broader medical community will be encouraged to list vacant rooms to support RCS & Ochsner students travelling to Brisbane.</p> <p>RCS students can access the following accommodation support (details on next slide):</p> <ul style="list-style-type: none"> Year 4 - priority access to RCS student accommodation. Short-stay options - students only pay when completing placements within the Learning Community Access to private lease subsidies to off-set rental costs when away from home.

N.B. While Commonwealth funding is intended to support Domestic students undertaking regional, rural or remote placements in locations classified as Modified Monash Model (MMM) 2-7, to ensure equity, alternate funding will be used to support Central Queensland, Wide Bay & Darling Downs – South West Learning Community students with travel and placement subsidies.

RCS Accommodation – Year 4 support

In 2026, Year 4 RCS students will have the option to apply for the following accommodation support:

RCS accommodation - short stay option - \$200 per week – capped at \$5000

- Suitable for students who will be away from their clinical unit for a minimum of 2 immersions (at least 16 weeks).
- Students will book for the dates that correspond to activities at their home clinical unit and only pay for weeks that accommodation is needed.
- As accommodation is fully furnished, students are expected to bring only the items they need (the RCS does not provide storage).

RCS Accommodation (full academic year - \$7000 per annum)

- Suitable for students who will complete the majority of immersions at their home clinical unit
- Students may submit room-mate preferences and will apply and be allocated a room for the full academic year
- Students will have exclusive access to the room for the academic year and will not be expected to remove items if they are away for an immersion

Private lease subsidy:

- \$3,000 for students paying >\$150 per week in rent
- \$6,000 for students with dependents
- Suitable for students who:
 - Prefer to maintain a private rental lease
 - Live with a partner, family or pet
 - Provide support to dependents
- To be eligible, students must submit formal documentation confirming their rental arrangement (e.g., lease agreement and/or proof of rent payments).

- Applications will open for Year 4 students first (Sept 2025) after immersion order and Clinical Extension pathways are released in August. Set rooms will be reserved for short-stay accommodation.
- Year 1 – 3 RCS students will be able to apply for support in November

RCS Accommodation – Year 1-3 support

In 2026, Year 1-3 RCS students are encouraged to rent privately and will be able to access the following accommodation support:

Private lease subsidies:

- \$3,000 for students paying >\$150 per week in rent
- \$6,000 for students with dependents
- Suitable for students who:
 - Prefer to maintain a private rental lease
 - Live with a partner or family
 - Provide support to dependents
- To be eligible, students must submit formal documentation confirming their rental arrangement (e.g., lease agreement and/or proof of rent payments).
- The following students are also eligible for a relocation grant of \$2000 (1 per household):
 - DD-SW Learning Community students relocating from Brisbane to Toowoomba for Year 2
 - WB Learning Community students relocating from Bundaberg to Hervey Bay for Year 3 & 4

RCS Accommodation (full academic year)

- Students will apply and be allocated a room in a shared unit for the full academic year
- Students will have exclusive access to the room for the academic year and are not expected to remove items if they are away for an immersion
- 2026 annual accommodation service rates:
 - Standard off-campus room \$7000
 - Ensuite on-campus room (Rockhampton only) \$8500
 - Premium on-campus studio (2 available in Rockhampton only) \$15,000

Year 1 – 3 RCS students will be able to apply for accommodation support from mid Oct and RCS accommodation will be confirmed 24 Nov 2025.

Why choose a private rental?

Location, Location, Location...

Our regional clinical units are located in some of Australia's most scenic and beautiful areas. Renting privately allows you to immerse yourself in the local lifestyle and become an active member of the community.

Flexibility, Independence, Choice

Live with friends, pets, your partner, or family—private rental gives you the freedom to choose who you share your space with. Enjoy the freedom to select a home that suits your needs, preferences, and schedule—whether that's a quiet studio, shared house near town or a place by the beach.

Affordable home base

With available subsidies, private rentals can be a cost-effective option that also supports your independence and allows you to create a home base outside of the academic year and you may be able to extend the lease beyond 12 months.

Median weekly rent for a 3-bedroom house in the regions: \$550 rent x 52 weeks = \$28,600

Share between 3 students each claiming \$3000 private lease subsidy: \$28,600 - \$9000 = \$19,600

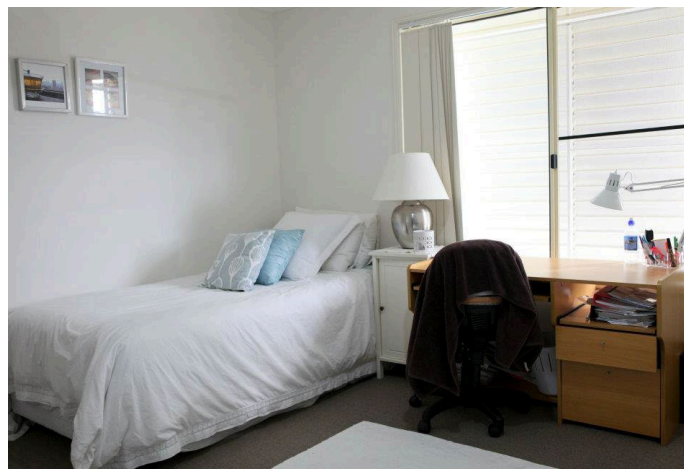
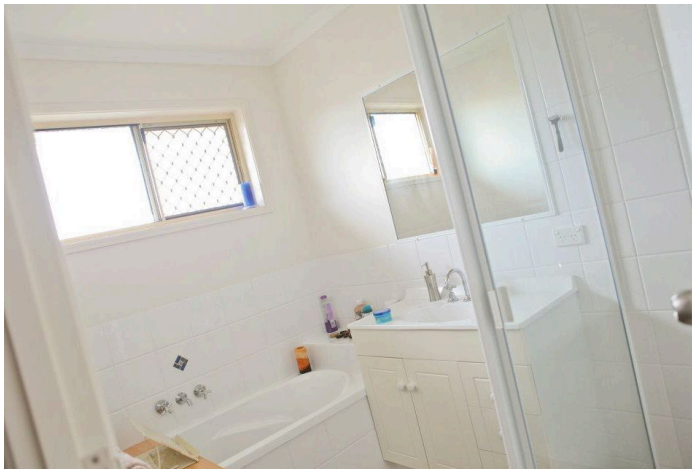
Annual rental cost per student:~ \$6,500 per annum or ~ \$125 per week.



RCS Accommodation

Bundaberg	Hervey Bay	Rockhampton	Toowoomba
<ul style="list-style-type: none"> Mixture of two and three bedroom properties 	<ul style="list-style-type: none"> Two, three and four bedroom townhouses 	<ul style="list-style-type: none"> Four bedroom apartments Studio apartments 3-bed apartment & townhouses 	<ul style="list-style-type: none"> Two and three bedroom units/townhouses

www.medical-school.uq.edu.au/accommodation



RCS Accommodation

- Fully furnished including whitegoods, kitchen and laundry
- Individual furnished bedroom with study space
- Shared bathroom
- Inclusive of all utilities – power, water, NBN internet
- Proximity to main teaching hospitals and practices
- Annual services charge:
 - \$7000 off-campus room
 - \$8,500 on-campus room
 - \$15,000 on-campus studio (2 only)



Rockhampton accommodation images

Questions?

Email:

uqrcs.enquiries@uq.edu.au

The RCS are currently implementing StarRez, a centralised on-line portal to improve accommodation management including applications, agreements, communication, payment, subsidies and maintenance requests – we will update the website 2026 information and guidelines shortly.

