

WORK  THE WORLD



MEDICAL ELECTIVE PLACEMENTS IN AFRICA & ASIA



OVERSEAS MEDICAL ELECTIVES

LOW-RESOURCE HEALTHCARE SETTINGS

On an overseas elective, you'll get experience in an unfamiliar clinical environment. You will see a diversity of advanced and unfamiliar cases, observe practises that are contrary to your existing knowledge, and learn how sociocultural factors impact the provision of care. This is an opportunity to challenge yourself and gain perspective through new experiences.

FLEXIBILITY AND CHOICE

You are in complete control of your experience. You choose the destination to which you want to travel and the departments through which you want to rotate. You can even choose to undertake day shifts, night shifts, or both. We guarantee your hospital placement, department choices, and supervisors in advance of your trip, and provide you with information so you can plan your elective down to the finest detail.

ACCOMMODATION

On one of our placements, you'll live in a private house with all the comforts of home (including WIFI). Each house has spacious shared bedrooms, bathrooms, comfortable social areas, dining rooms, gardens... the list goes on. You will live with fellow students from different healthcare disciplines all over the world, giving the house a social atmosphere.

CATERING

Your breakfast and dinner are freshly prepared by your in-house catering team. The teams have impressive culinary backgrounds and will prepare local delicacies and more familiar western-style dishes. Don't worry if you have food sensitivities — your team will accommodate your dietary requirements. Don't forget to ask us about our famous weekly barbecue nights when enquiring about your placement.

WHY WORK THE WORLD?

We have tailored thousands of overseas medical electives since 2005. You can take full advantage of our well-established global infrastructure, including the partnership we have with teaching hospitals, regional hospitals, large government hospitals, tertiary referral centres, specialist hospitals, and even small rural health posts.



TEAM

Experienced, locally-hired teams manage our programs in country. They have strong relationships with our partner hospitals that you will take full advantage of. It's important to note that the team will always fully respect your independence both in and out of the hospital, however they are contactable 24/7 as a backup.

HOW IT WORKS

CHOOSE YOUR DESTINATION

You can choose from a range of destinations across Africa and Asia. If you're not sure which destination to choose, just speak to one of our consultants. We'll help you find the program that most closely matches your interests. Already know where you want to go? Get in touch and we'll do a quick availability check in your chosen destination.

SECURE YOUR PLACE

All you need to do is pay your \$500 registration fee and we'll reserve your place there and then. You can spread the cost of your placement by breaking it into smaller instalments. Pay as much or as little as you like — whenever you like — as long as your balance is clear at least 90 days before your trip.

TRIP PREPARATION

You'll have a direct line of communication with us in the run up to your trip. You are in control of the process, but we offer advice and assistance with the more administrative aspects of planning — university paperwork, entry visa applications and the like. We also offer access to a personalised online elective planner through which you can manage your trip preparation. This includes details about your placement hospitals and departments to help you plan with information at your fingertips.

WHEN YOU ARRIVE

Our in-country team will be waiting for you when you land at the local airport. You'll head together to the Work the World house to meet your housemates and settle in. You'll undergo your welcome briefing, and the local team will take you out on your city orientation.

YOUR CLINICAL PLACEMENT

Your in-country team take you to your placement hospital for an orientation, introducing you to your supervisors and key department staff. You'll then spend Monday to Friday each week in the hospital getting eye-opening clinical experience. If your university requires that you complete a certain number of placement hours, we can facilitate this.

TRAVEL AND ADVENTURE

Spend your evenings and weekends exploring whichever destination you choose. Trek through the snowy Himalayan mountains, relax on Southeast Asia's tropical paradise beaches, go on safari in Africa... the choice is entirely yours. If you want to travel solo, you'll quickly make new friends in the Work the World house.



UNIQUE MEDICAL EXPERIENCES

On your overseas medical elective, you'll see a healthcare system totally different from your own.

CULTURAL DIFFERENCES

You'll learn how religious and cultural issues change the way care is delivered, and get real-life, in-person experience with global health. Getting experience with conditions and practises you've never seen before is a part of every placement.

HOSPITAL PARTNERSHIPS

Most of our partner hospitals are low-resource with high patient volumes. Many hospitals also charge patients for care. This means patients delay treatment until the last minute, so you'll also see late presentations of severely advanced conditions.

CHOOSE YOUR DEPARTMENTS

A key strength of our hospital partnerships is the diversity of experience they offer you. You can choose to rotate through departments including (but not limited to) general medicine, surgery, emergency, ICUs, anaesthesiology, OBG, and paediatrics. If you want more specialised experience, you can spend time in departments like cardiology, neurology and oncology.

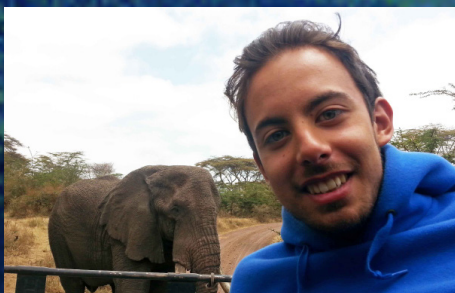
Just tell us about your clinical interests and we'll help create an elective placement that fulfils them.



DESTINATIONS

OVERVIEW

Your clinical placement typically runs from Monday to Friday, leaving you plenty of time in the evenings and at weekends to experience whichever destination you choose to visit. In the evenings, you and your housemates can draw on the knowledge of our in-country teams to discover what the locale has to offer. Depending on the destination, you can visit bustling night markets, vibrant cultural festivals, and an abundance of restaurants and bars. At the weekends you can trek through lush rainforests, spot wildlife on savannah safaris, sip cocktails on tropical beaches, wander through awe-inspiring religious temples... Our destinations offer something for everyone.



“ I scrubbed into surgical theatre and assisted with a hernia mesh replacement. I used the suction device as well as performing sutures on the patient at the end of the operation. It was an eye-opener as it allowed me to appreciate the intricacies and difficulties associated with surgery in a developing country.”

FRANK YU
Bond University

CONTACT THE EXPERTS






SCAN TO FIND
OUT MORE

All our destinations have a set number of available spaces. To maintain the level of quality we're famous for we can't oversubscribe, so booking as early as possible is always advised. Visit our website for full details on each of our healthcare placements and for a full price guide.

Visit: www.worktheworld.com.au
Call: **1800 718 411**
Email: info@worktheworld.com.au

Follow Us:

   /worktheworld



An experience like this changes you. It changes the way you see yourself, it changes the way you see healthcare.”

MADLINE NASTILY
University of Sydney